



PCM

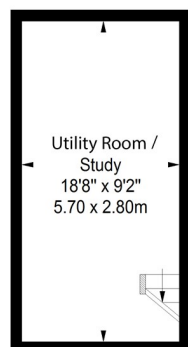
**£2,000 PCM**  
**Mcdermott Road**  
**, SE15 4NZ**

**GARETH**  
**JAMES**

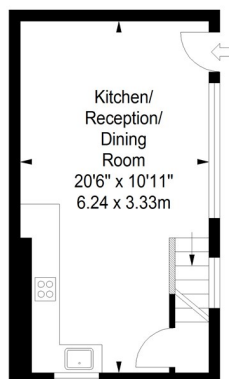


McDermott Road  
Approximate Gross Internal Area  
617 sq ft / 57.33 sq m

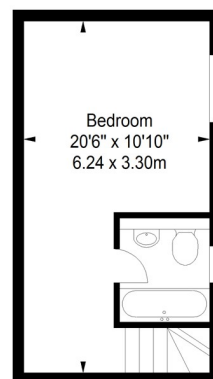
GARETH  
JAMES



Basement



Ground Floor



First Floor

ILLUSTRATION FOR IDENTIFICATION PURPOSES ONLY

ALL MEASUREMENTS ARE MAXIMUM, AND INCLUDE WINDOW BAYS AND WARDROBES WHERE APPLICABLE  
THIS PLAN MUST NOT BE REPRODUCED BY ANY OTHER PERSON WITHOUT PERMISSION



Energy Efficiency Rating		Current	Potential
Very energy efficient - lower running costs			
(92 plus) A			
(81-91) B			87
(69-80) C			
(55-68) D			
(39-54) E		54	
(21-38) F			
(1-20) G			
Not energy efficient - higher running costs			
England & Wales		EU Directive 2002/91/EC	EU



Agents Note: Whilst every care has been taken to prepare these particulars, they are for guidance purposes only. All measurements are approximate and are for general guidance purposes only and whilst every care has been taken to ensure their accuracy, they should not be relied upon and potential buyers/tenants are advised to recheck the measurements

GARETH  
JAMES

OFFICE ADDRESS  
129 Bellenden Road  
London  
SE15 4QY

OFFICE DETAILS  
02077324330  
lettings@garethjames.com  
<https://www.garethjames.com/>